

# OPERATING INSTRUCTIONS FOR NETWORK CAMERA

<http://cam1.fires.sk>

## STARTING THE CONTROL PANEL

You need optional internet browser for fire resistance test observation (Internet Explorer, Mozilla Firefox) and connection to the internet.

Please, log-in by adding user and password before test observation.

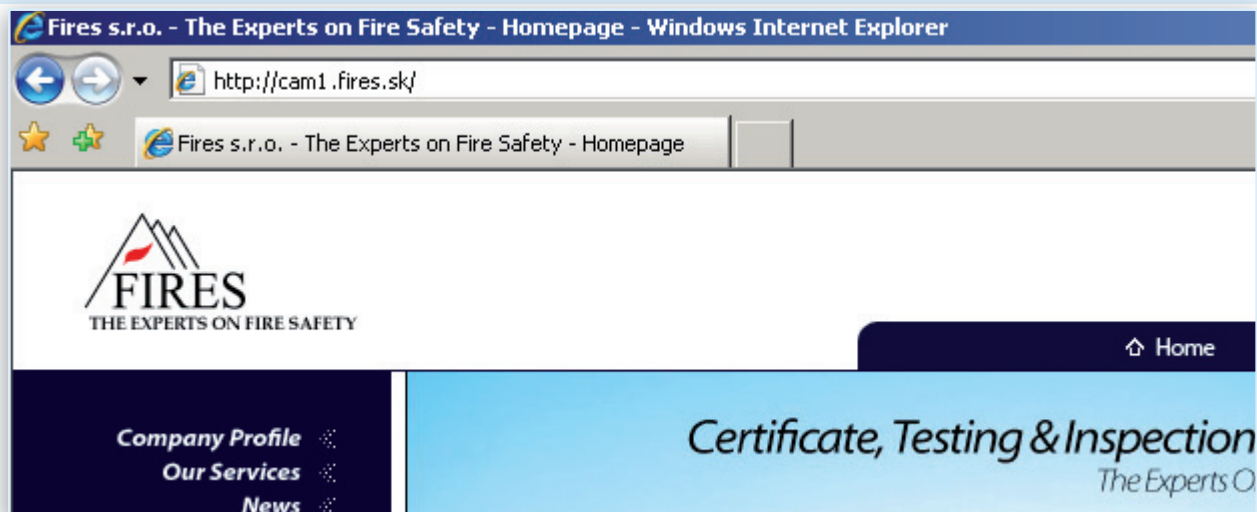


**Your outgoing communication must be allowed on TCP port 1025**

Log-in window is opened after clicking to link *RUN FIRE RESISTANCE TEST OBSERVATION* located on our web page (url://...), or by typing following address to your browser: **cam1.fires.sk**



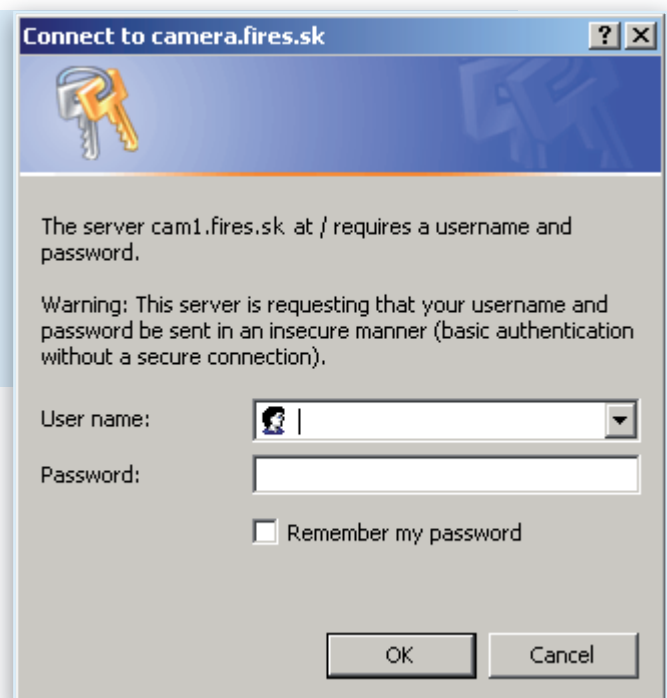
**Note: do not type www.cam1.fires.sk!**



Thereafter, the log-in window is opened, which requires typing of user name and password

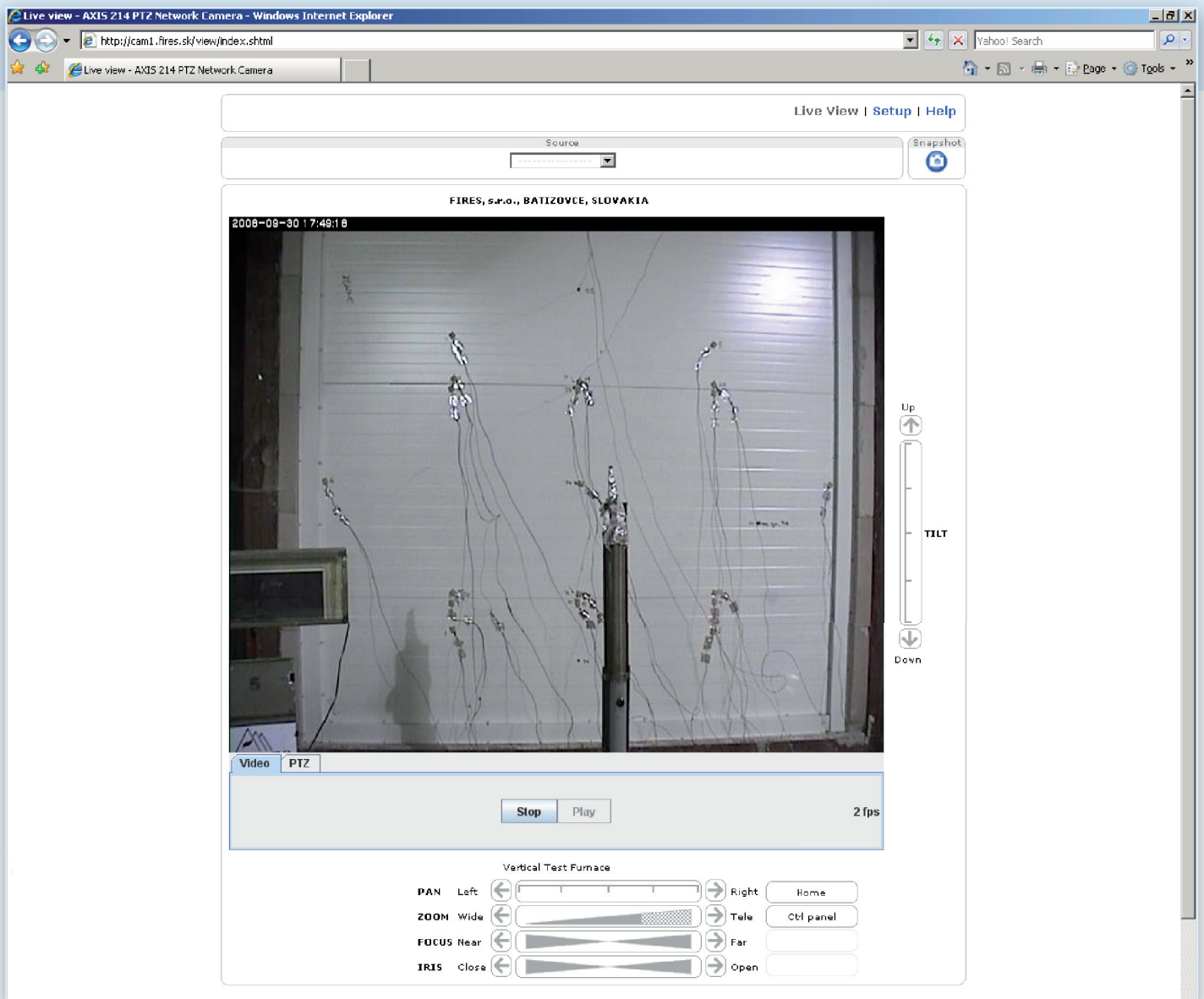
Your contact person in FIRES, s.r.o., Batizovce will provide you with user name and password.

Password is changed after each fire test and on-line observation is limited to 5 hours. After this period, the screen is blocked.

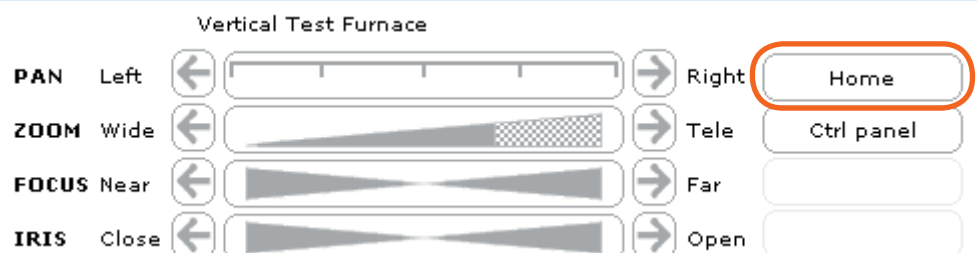


Your browser may ask for installing additional software for observation the tests after log-in (Java Applet, Active-X, etc.).  
If you have no possibility to install this software, please contact us and we will find the best solution for you.

The window with test screen will open after log-in.



After log-in click on **HOME** button and camera will set to home position (view on substantial part of specimen and on clock watch).



## CAMERA CONTROL

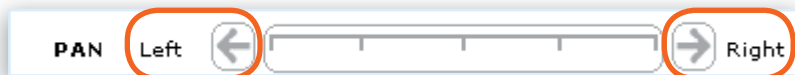
You can control camera by two ways: by clicking on buttons on the screen or by mouse.

### Control by buttons on the screen

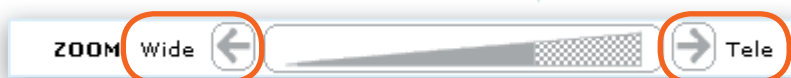
You move with camera up or down by clicking on arrow button **UP** or **DOWN** on button bar TILT.



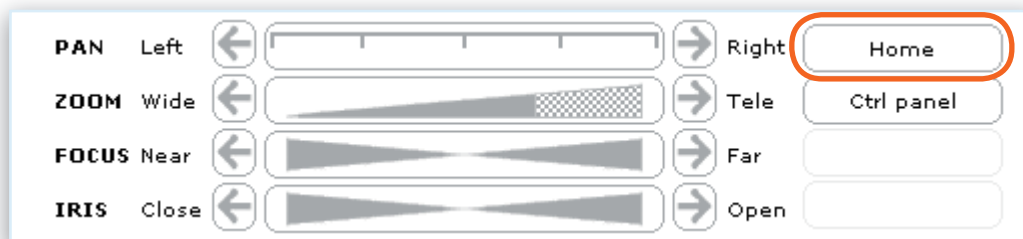
You move with camera left or right by clicking on arrow button **LEFT** or **RIGHT** on button bar PAN.



You zoom-in or zoom-out by clicking on arrow button **WIDE** or **TELE** on button bar ZOOM.



By clicking **HOME** button you will go to home screen (main view of specimen).



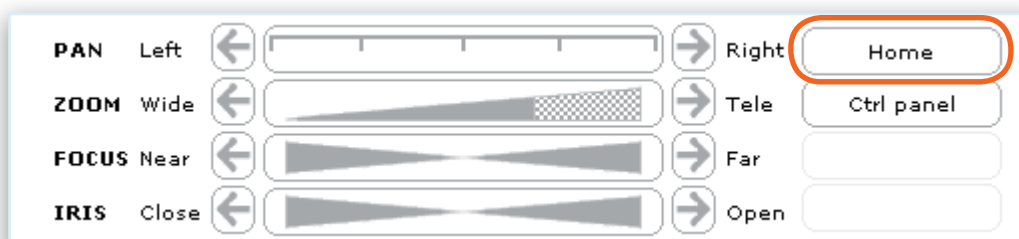
## Control of camera by mouse

Move with mouse cursor across the screen and left click on point you want to see. Selected point will move to centre of screen. You can move to any direction with this procedure.

For zoom-in of screen move with mouse cursor on point you want to zoom-in. Press left button on mouse and hold it. During holding of left button, move with mouse (any direction) whereby you choose your zoom-in area (defined by red rectangle, the less rectangle is, the more zoom-in occurs and vice versa). Release mouse left button and the screen will zoom-in to your selected detail.

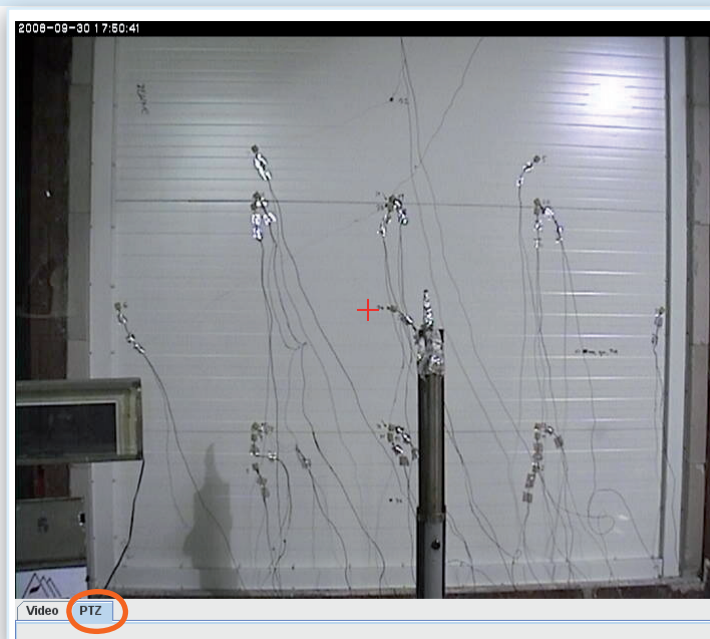


By clicking **HOME** button you will go to home screen (main view of specimen).





For simplified mouse control, you can turn on crosshair, which indicates centre of screen. Click on **PTZ** button (left bottom of the screen).

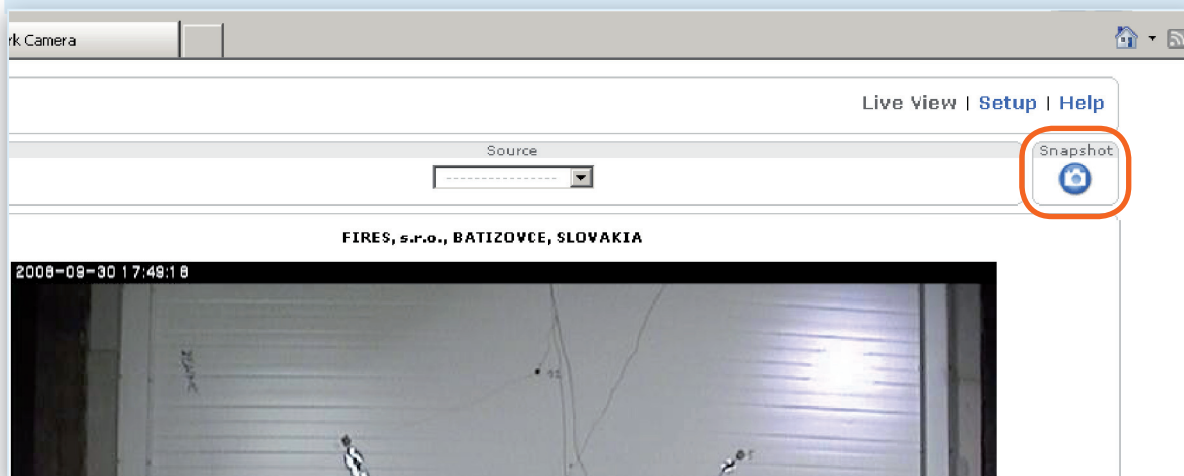


Click on square in next of title CROSSHAIR. Thereby, the red crosshair will appear in centre of screen.



## MAKING OF PICTURES

You are allowed to make picture by clicking on **SNAPSHOT** button during the whole course of test observation.



New window is opened (opening of new windows should be enabled). You can save the picture by pressing right mouse button, the menu is opened and left click to **Save picture as...**

